

12025 NE Marx St. Portland, OR 97220  
503-253-3511 / www.greenleaflab.org

Green Leaf Lab proudly follows  
ISO/IEC 17025:2005(E) Quality Standards

## Pineapple

*Cannabis Angels*

Sample ID S104714 Matrix: Flower

Date Accepted: 11/25/15 Date Analyzed: 12/2/15

Sampling Method Laboratory Sampled Batch

### Analysis Methods

Potency via HPLC

Pesticide via GC-MS / ELISA

Mold & Mildew via Plate Culture

### Instruments

HP Agilent 1100 Series

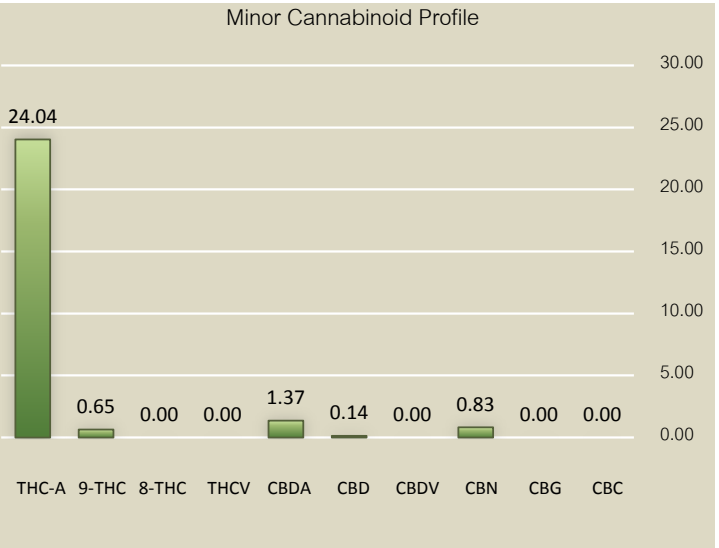
Analysts

PMH/AKH/EEW

Testing in compliance with Oregon State Law and OAR 333-0081190

### Potency Analysis

Cannabinoids (% weight)		Moisture Adjusted
Total THC (THCA*0.877+Δ9+Δ8)		22.47
Total CBD ((CBDA*0.877)+CBD)		1.38
THCA	24.04	24.86
Δ9-THC	0.65	0.67
Δ8-THC	ND @ 0.01	ND @ 0.01
THCV	ND @ 0.01	ND @ 0.01
CBDA	1.37	1.41
CBD	0.14	0.14
CBDV	ND @ 0.01	ND @ 0.01
CBN	0.83	0.86
CBG	ND @ 0.01	ND @ 0.01
CBC	ND @ 0.01	ND @ 0.01
<b>Total Cannabinoids</b>	<b>27.02</b>	<b>24.71</b>
		3.42% Moisture

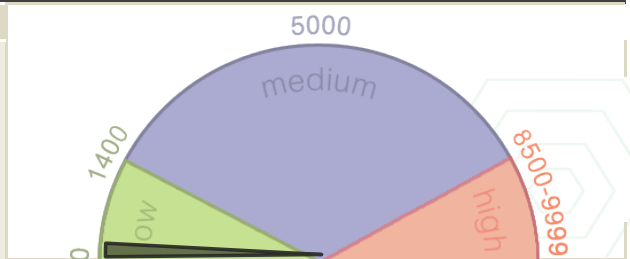


\*The HPLC measures cannabinoids in both their acidic and activated form; total THC represent the potential total activated THC.

### Mold and Mildew Screen

Total Colonies **80** CFU/g

This color coded gauge represents the sample's colony forming units per gram (CFU/g) and how it compares to flowers tested at Green Leaf Lab. This is not a doctor's recommendation and is only a tool for helping compare your sample to CFU/g values observed in the lab. The larger size of the medium range indicates that the majority of samples fall within the 1400-8500 range. A CFU/g of 10,000 or above does not comply with Oregon State law.



### Pesticide Analysis

Pyrethroids	ND @ 0.1	ppm
Organophosphates	ND @ 0.1	ppm
Carbamates	ND @ 0.1	ppm
Chlorinated Hydrocarbons	ND @ 0.1	ppm
<b>Total Pesticide Content</b>	<b>ND @ 0.1</b>	<b>ppm</b>

### Definitions

ND: not detected  
ppm: parts per million,  
CFU/g: colony forming units per gram

Kevin Hounshell, Laboratory Director



Scan this QR code for more information about your lab report.

Test results only valid for samples collected

Reports shall not be repeated except in full